



KATY CHRISTIAN COMMUNITY CHURCH

Effective 06/15/2021

Sport Ministry Policy

Special COVID-19 consideration during KCCC's Transitioning Phase

- We encourage individual that have been vaccinated to participate. You are considered fully vaccinated after two weeks following the second dose of a two-dose COVID-19 vaccination (e.g., Moderna or Pfizer) or the single dose of a one-dose COVID-19 vaccination (e.g., Johnson & Johnson).
- During the last 14 days, if you have been around anyone who has tested COVID-19 positive, traveled to a COVID-19 hotspot, or exhibited any COVID-19 symptoms (i.e., fever, shortness of breath, cough), please self-quarantine for 14 days, consult your primary care physician, and do not enter the church.
- Masks are encouraged but not required.
- By entering this church, you agree to abide by these guidelines.

It is the mission of Katy Christian Community Church's sport ministry to develop followers of Jesus Christ:

1. By bringing **unity** to people through the common love of sports. *Psalm 133:1*
 2. By **fellowship** with other believers in fun and competitive sport activities. *Acts 2:44*
 3. By showing the love of Christ in our **attitude** and **actions** toward others, reflecting Christ's love. *1 Corinthians 10:33*
- Sport ministry is under and part of KCCC 's Life Group (LG) ministry. The LG deacon, the General Affairs deacon and three designated Sport Coordinators form the **KCCC Sport Committee**. The **KCCC Sport Committee** reviews and revises the policy as needed, maintains up to date team roster and oversees the day-to-day activities ensuring all guidelines are adhered to.
 - *Specific Sport* activities are limited to specific time of the week as defined by KCCC.
 - *LG Family* activity time is reserved for LG families as an outreach to families in the community, The Organizer for The *LG Family* activity is limited to Under-Shepherd (US) only;
 - *Specific Sport* activity time is reserved for sport teams. Each sport team must consist of one captain and one vice captain. The Organizer for the *Specific Sport* activity is limited to team captain only on a first come first served basis and coordinated by the designated Sport Coordinator within the time slot defined.
 - Qualifications:
 - Team captain and Team vice captain: KCCC members and mature Christians approved by the **KCCC Sport Committee**.
 - Designated Sport Coordinator: Current US involved in specific sport activities, preferably one coordinator for each type of sport activities.



KATY CHRISTIAN COMMUNITY CHURCH

Effective 06/15/2021

- The Organizer (US and the team captain) must assume the following responsibilities: repeated failure to fulfill these responsibilities will result in forfeiture of the responsibility of Organizer. She/he must:
 - Be present to oversee the activity during the entire length of event.
 - Be responsible for opening and closing the church after the event properly.
 - Ensure ALL participants NOT leave any personal belongings on the site. Keep the facility clean. After the event, turn off all lights including bathroom; activate the alarm and lock all the doors.
 - Ensure ALL participants have current Hold Harmless Agreement and validated Sport Activity Participation form on file.
 - Ensure ALL participants sign in each time. The sign-in log should be kept as permanent records with the **KCCC Sport Committee**.
 - Completed Responsibility Training at least once a year.
 - Take responsible and timely action to prevent any property damage, personal injury, and misbehavior.
 - The Organizer and all participants are responsible for correcting poor sportsmanship that may cause injury to others and reporting the occurrence to the member of the **KCCC Sport Committee** who is authorized by KCCC to suspend the serious or repetitive offenders.
 - Since sport related activities are part of LG ministry, participants for *Specific Sport* activities are reserved for active members of LG approved by his/her US. Active member of LG is defined as those regularly attending LG meetings with at least 50% in attendance of all LG meetings. Participation in *Specific Sport* activities will be reviewed and approved on an annual basis by the US caring for the participant and the **KCCC Sport Committee**.
 - Each sport related activity by the same group should not last more than **two hours**.
 - Reservation for the same team is limited to one reservation per week.

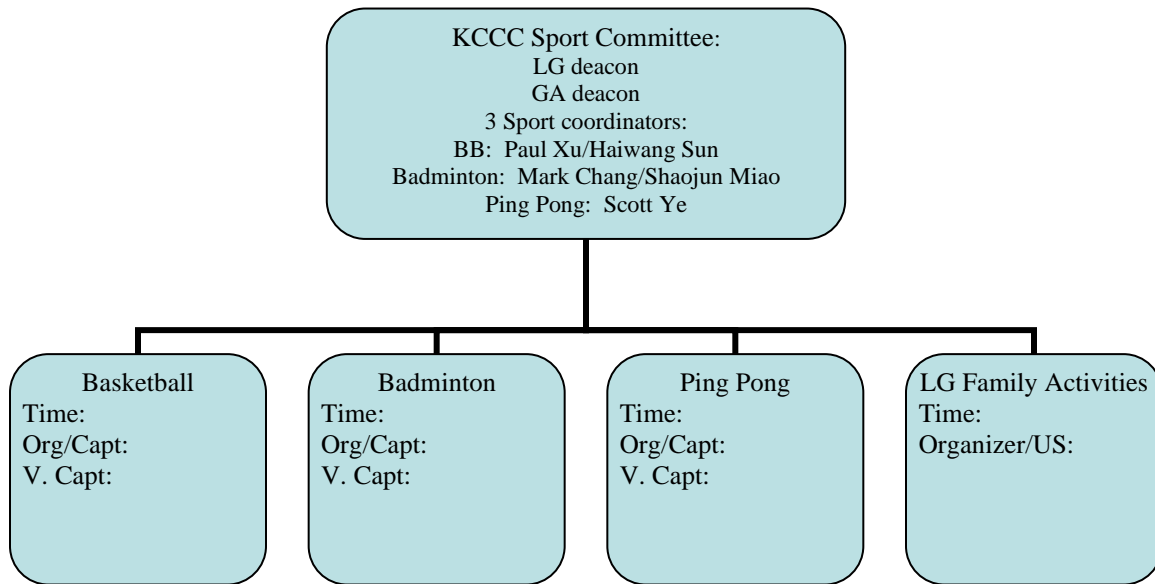
For all inquiries, please contact office@katyccc.org.

Sport related activities are subject to change or cancellation when there is a conflict with church wide events.



KATY CHRISTIAN COMMUNITY CHURCH

Effective 06/15/2021



To request for participation in KCCC sports activities:

